



**7603**

**129TH DRIVE SE  
SNOHOMISH, WA**

**LAURA HUNTINGTON**  
PRINCIPAL - MANAGING BROKER  
PHONE: (425) 754 - 4518  
LHUNTINGTON@WORKMANRES.COM

**DEVERIE WOOD**  
ASSOCIATE BROKER  
PHONE: (206) 920-2898  
DWOOD@WORKMANRES.COM

7603 129TH DRIVE SE

SNOHOMISH, WA 98290



NWMLS #1731466



**workmanres.com**

WorkmanReal Estate Services | 127 Avenue A, Suite 202, Snohomish WA 98290 | 425-754-4518



NWMLS #1731466



**workmanres.com**

WorkmanReal Estate Services | 127 Avenue A, Suite 202, Snohomish WA 98290 | 425-754-4518



NWMLS #1731466



**workmanres.com**

WorkmanReal Estate Services | 127 Avenue A, Suite 202, Snohomish WA 98290 | 425-754-4518



NWMLS #1731466



[workmanres.com](http://workmanres.com)

WorkmanReal Estate Services | 127 Avenue A, Suite 202, Snohomish WA 98290 | 425-754-4518



NWMLS #1731466



**workmanres.com**

WorkmanReal Estate Services | 127 Avenue A, Suite 202, Snohomish WA 98290 | 425-754-4518



NWMLS #1731466



**workmanres.com**

WorkmanReal Estate Services | 127 Avenue A, Suite 202, Snohomish WA 98290 | 425-754-4518



NWMLS #1731466



**workmanres.com**

WorkmanReal Estate Services | 127 Avenue A, Suite 202, Snohomish WA 98290 | 425-754-4518



7603 129TH DRIVE SE

SNOHOMISH, WA 98290

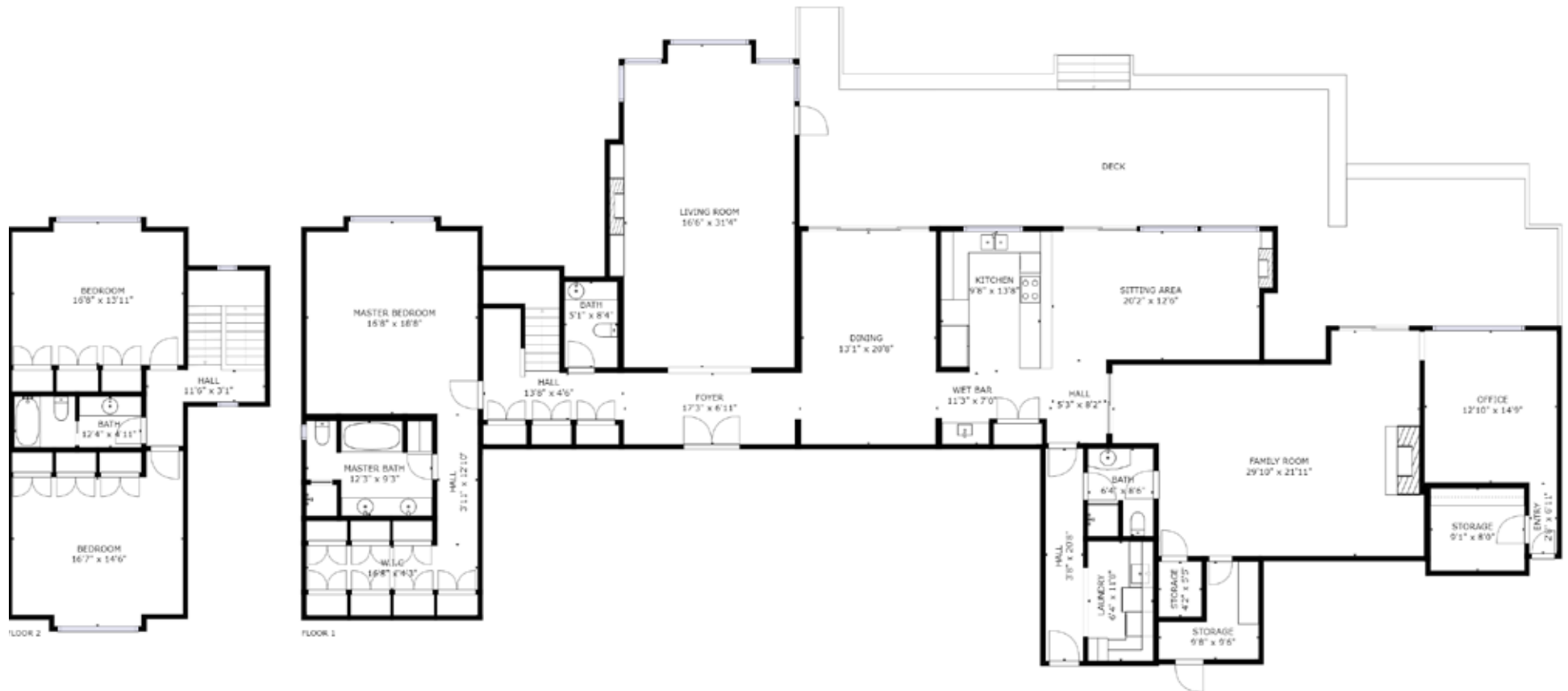


NWMLS #1731466



**workmanres.com**

WorkmanReal Estate Services | 127 Avenue A, Suite 202, Snohomish WA 98290 | 425-754-4518



NWMLS #1731466



**workmanres.com**

WorkmanReal Estate Services | 127 Avenue A, Suite 202, Snohomish WA 98290 | 425-754-4518

# OFFERED FOR SALE

# \$1,395,000

**DESIGNED BY THE PROMINENT NORTHWEST ARCHITECT RALPH ANDERSON  
AND CONSTRUCTED  
BY FLOYD ERICKSON SR.**

4,243 Sq Ft

THE ORIGINAL HOME HAS BEEN CUSTOMIZED FOR THE CURRENT OWNER

3 Bedrooms, 3.75 Bathrooms,  
One Office/Craft Room

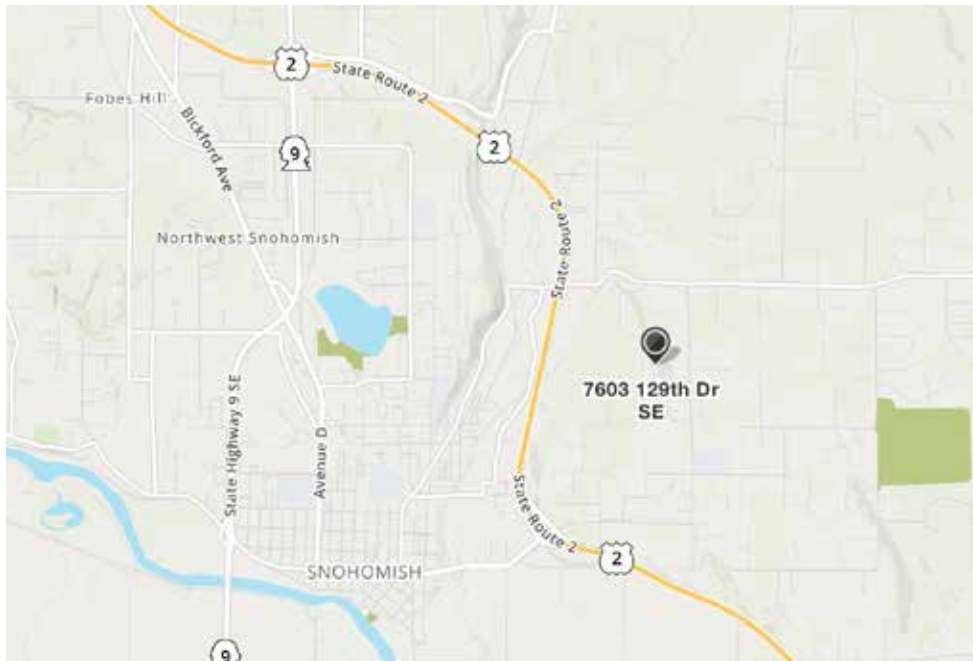
CAPTURING VIEWS OF THE CASCADE MOUNTAIN RANGE AND LIGHT FROM THE  
RIDGE ON DUTCH HILL.

Garage Attached, Carport-Attached,  
Carport-Detached

THIS HOME FEATURES WITHIN AND THROUGHOUT INTIMATE AND  
INTENTIONAL DESIGN DELIVERED WITH FINE CRAFTSMANSHIP

.79 Acres

Built 1980



NWMLS #1731466



**workmanres.com**

WorkmanReal Estate Services | 127 Avenue A, Suite 202, Snohomish WA 98290 | 425-754-4518