



LAURA HUNTINGTON

BROKER OWNER

PHONE: (425) 754-4518

LHUNTINGTON@WORKMANRES.COM

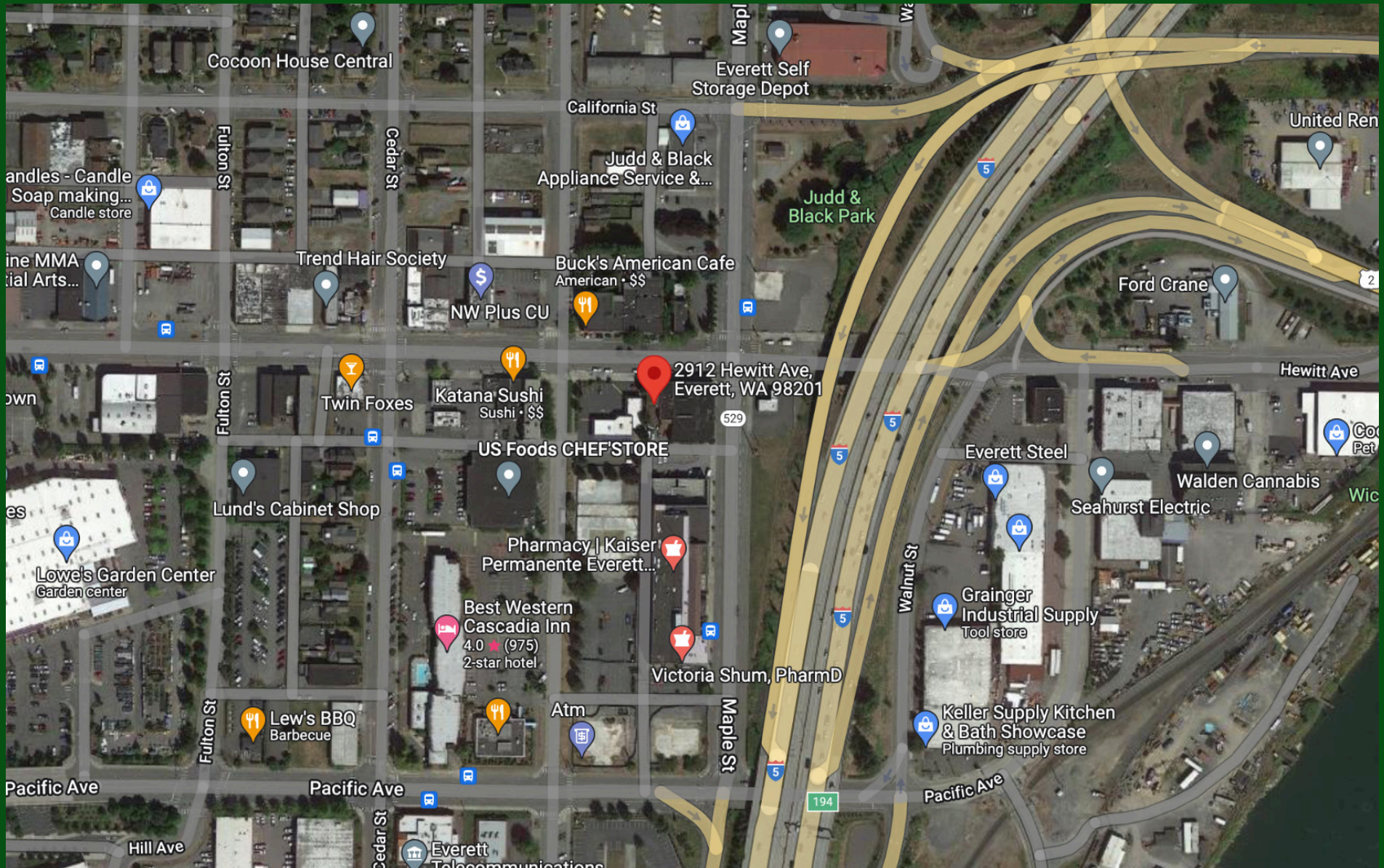
2912-2920 HEWITT AVE EVERETT, WA

DEVERIE WOOD

ASSOCIATE BROKER

PHONE: (206) 920-2898

DWOOD@WORKMANRES.COM



CBA # 31850104



workmanres.com

WorkmanReal Estate Services | 127 Avenue A, Suite 202, Snohomish WA 98290 | 425-754-4518

2912-2920 HEWITT AVENUE

EVERETT, WA 98201



CBA # 31850104



workmanres.com

127 Avenue A, Suite 202, Snohomish WA 98290 | 425-754-4518

VIEW LOOKING
I-5 WEST



VIEW LOOKING
I-5 EAST

CBA # 31850104



2912-2920 HEWITT AVENUE

EVERETT, WA 98201



1-5, FACING EAST

**PARKING BEHIND
BUILDING**

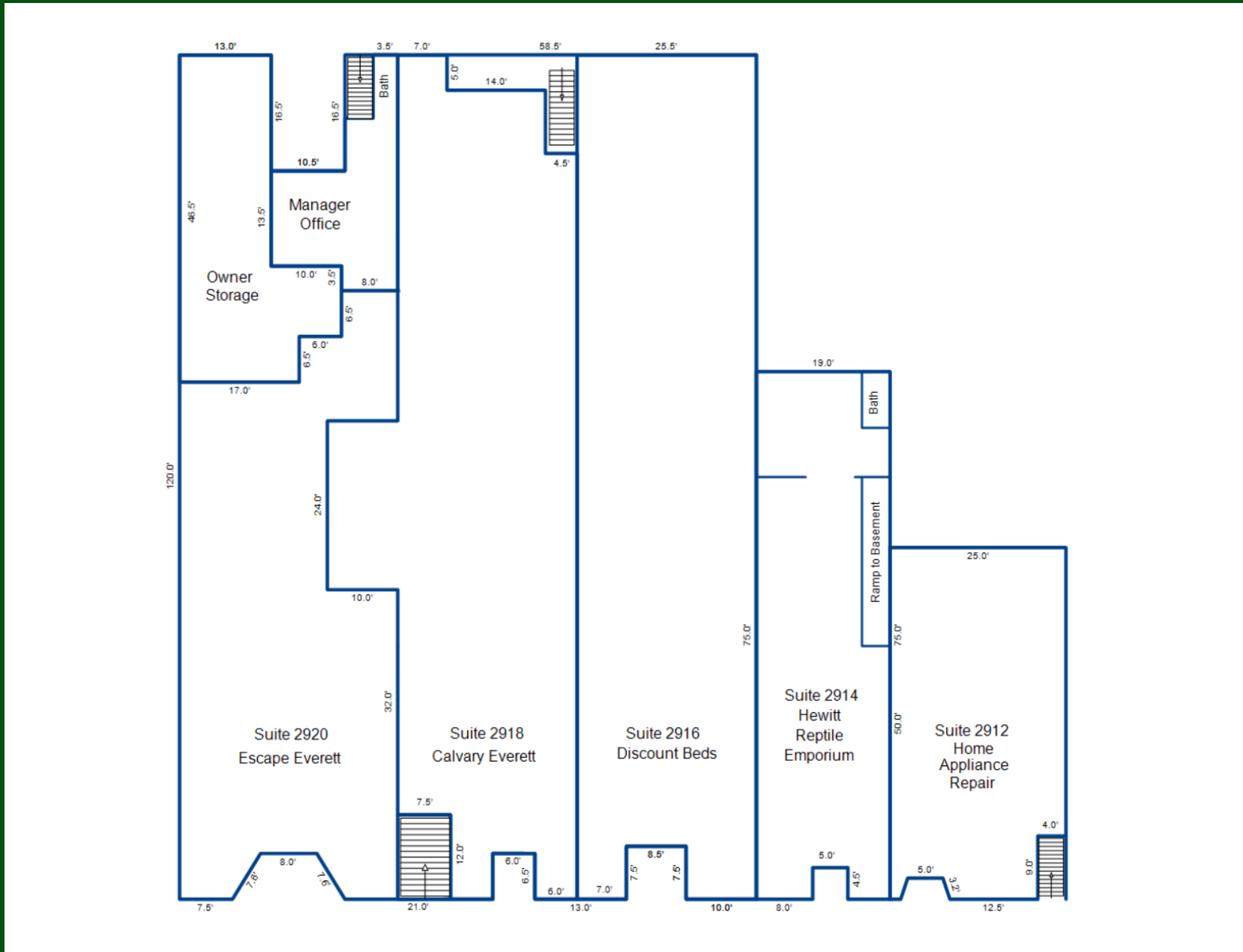
**BACK OF
BUILDING
WITH PARKING**



workmanres.com

WorkmanReal Estate Services | 127 Avenue A, Suite 202, Snohomish WA 98290 | 425-754-4518

CBA # 31850104



2912-2920 HEWITT AVENUE

EVERETT, WA 98201

RETAIL OFFERED FOR SALE

\$4,650,000

***EVERETT CBD URBAN MIXED USE ZONING**

***Fully Leased Mixed Use Commercial on Primary East West Corridor from Interstate 5 and Washington State Highway 2**

***Three Buildings with Frontage on Hewitt Avenue to the Rear**

***Assembly of Four Parcels directly North of Kaiser Permanente and Visible from Interstate 5**

***High Density Residential Area proximate to Everett Transit Center**

Building Size: 28,494 Lot Size: .48 AC

Retail Space: 14,860 SF

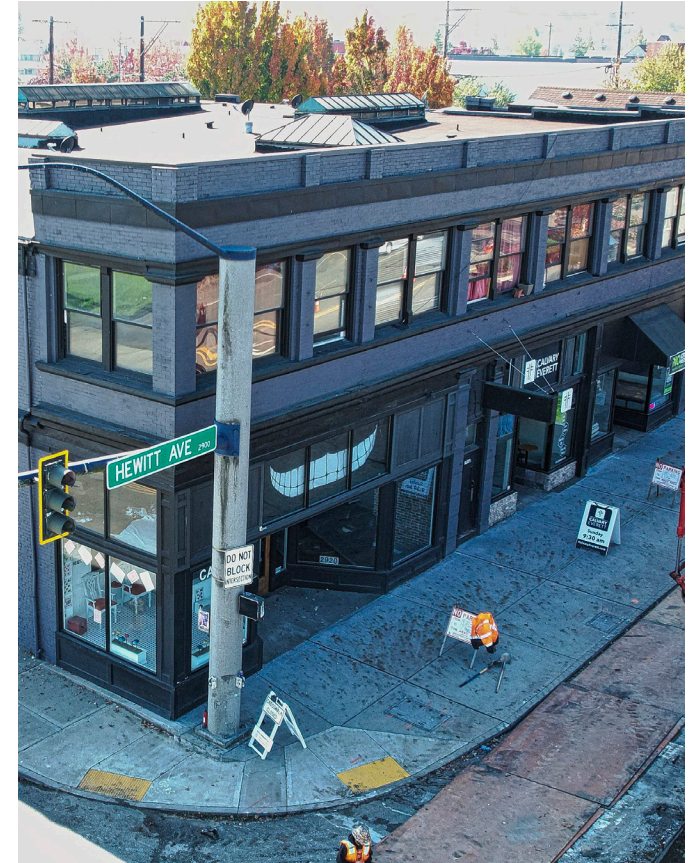
Residential Space: 11,656 SF

25 Parking Spaces

Building Size: 28,494 Lot Size: .48 AC

Please Call Laura, Listing Agent for Tour by Appointment

425-754-4518



CBA # 31850104



workmanres.com

127 Avenue A, Suite 202, Snohomish WA 98290 | 425-754-4518