

**Laura Huntington**  
Principal - Managing Broker  
Phone: (425) 754-4518  
Laura@workmanres.com

**2219 37th Street**  
**Everett, WA**

**Deverie Wood**  
Associate Broker  
Phone: (206) 920-2898  
DWood@workmanres.com

# OFFERED FOR LEASE

## EVERETT CBD-INDUSTRIAL WORKSHOP WITH OFFICE SPACE

\*LOCATED STRATEGICALLY NEAR INTERSTATE 5 AND THE EVERETT CENTRAL BUSINESS DISTRICT.

\*SINGLE AND THREE PHASE POWER SERVES THE 2468 ASF SPACE FOR LEASE.

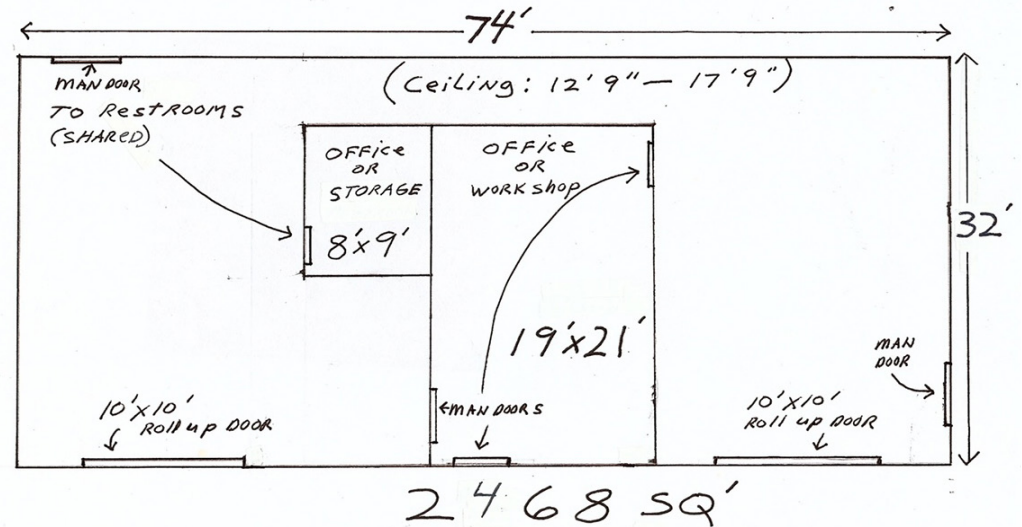
\*TWO 10' X 10' ROLL UP DOORS, THREE MAN DOORS, CEILING HEIGHT: 12'9" TO 17'9". UPDATED WITH PUD / LED LIGHTING PACKAGE

\*ACCESS TO SHARED HIGH DOCK/GRADE LEVEL DOCK AND STAGING AREA OUTSIDE THE LEASED AREA.

\*AVAILABLE NOW!

**CALL LAURA FOR A TOUR! 425-754-4518**

SHOP BUILDING  
Located off 37th in Everett  
2219 37th



BASE RENT IS \$2989.99 MO.  
AT \$1.21/SF/MONTH PER SF

NNN RENT IS \$341.87 MO.  
AT .14/SF/MONTH PER SF

**TOTAL RENT:  
\$3331.86 MO.**

**CBA# 39990195**

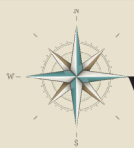


2219 37TH STREET

EVERETT, WA 98201



CBA# 39990195



**workmanres.com**

WorkmanReal Estate Services | 922 First St, Suite A, Snohomish WA 98290 | 425-754-4518

2219 37TH STREET

EVERETT, WA 98201



CBA# 39990195



**workmanres.com**

WorkmanReal Estate Services | 922 First St, Suite A, Snohomish WA 98290 | 425-754-4518