



RETAIL/OFFICE FOR LEASE

CBA#610660

LAURA HUNTINGTON
PRINCIPAL - MANAGING BROKER
PHONE: (425) 754-4518
LHUNTINGTON@WORKMANRES.COM

1325 STATE AVENUE
MARYSVILLE, WA

DEVERIE WOOD
ASSOCIATE BROKER
PHONE: (206) 920-2898
DWOOD@WORKMANRES.COM

1325 STATE AVENUE

MARYSVILLE, WA 98270



workmanres.com

WorkmanReal Estate Services | 127 Avenue A, Suite 202, Snohomish WA 98290 w| 425-754-4518

CBA #610660

1325 STATE AVENUE

MARYSVILLE, WA 98270



CBA #610660



workmanres.com

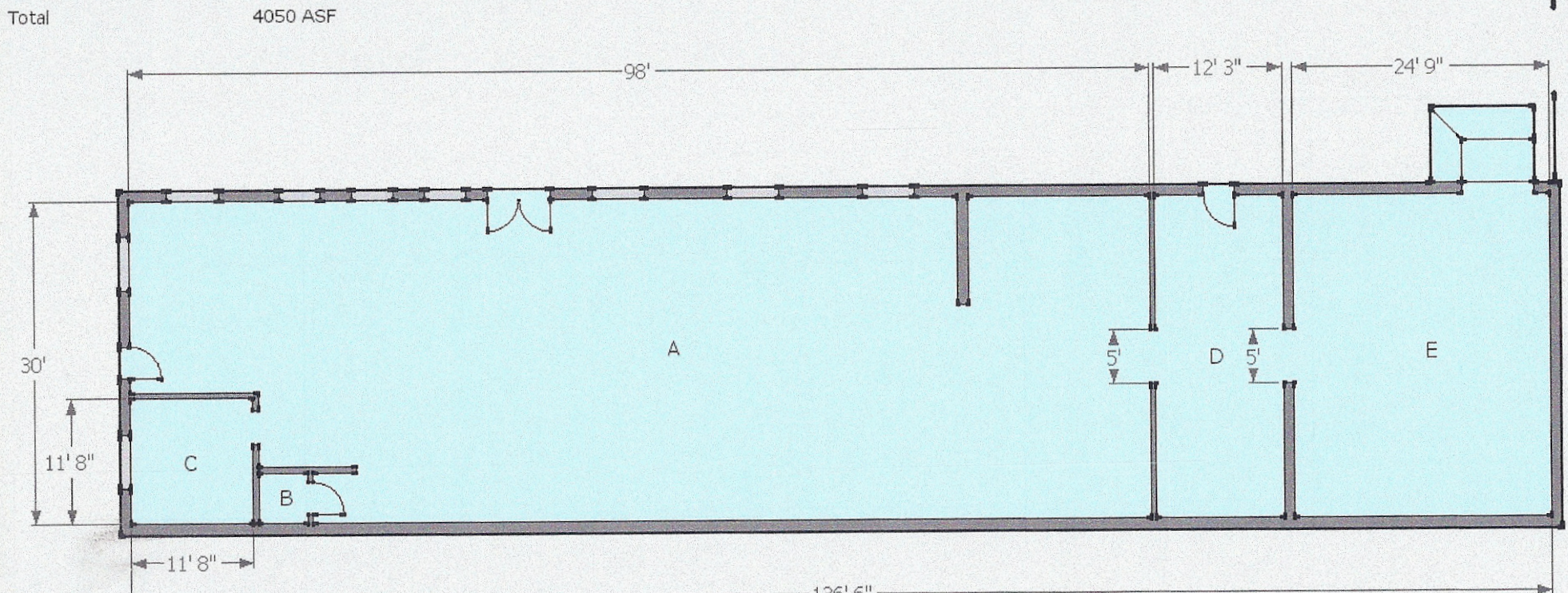
WorkmanReal Estate Services | 127 Avenue A, Suite 202, Snohomish WA 98290 w| 425-754-4518

LEASING INFORMATION

- *Retail Location in Central Marysville
- *30 front feet with large glass windows on State Avenue
- *4050 SF Rentable Area
- *Shipping Dock Door
- *High Traffic count for Local visibility
- *Shipping Dock Door

Lease Info:

Min. Rent Per SF/Yr	\$9.93
Max. Rent Per SF/Yr	\$9.93
NNN charges:	\$1.80 per SF
Total Monthly Rent:	\$3,353.00

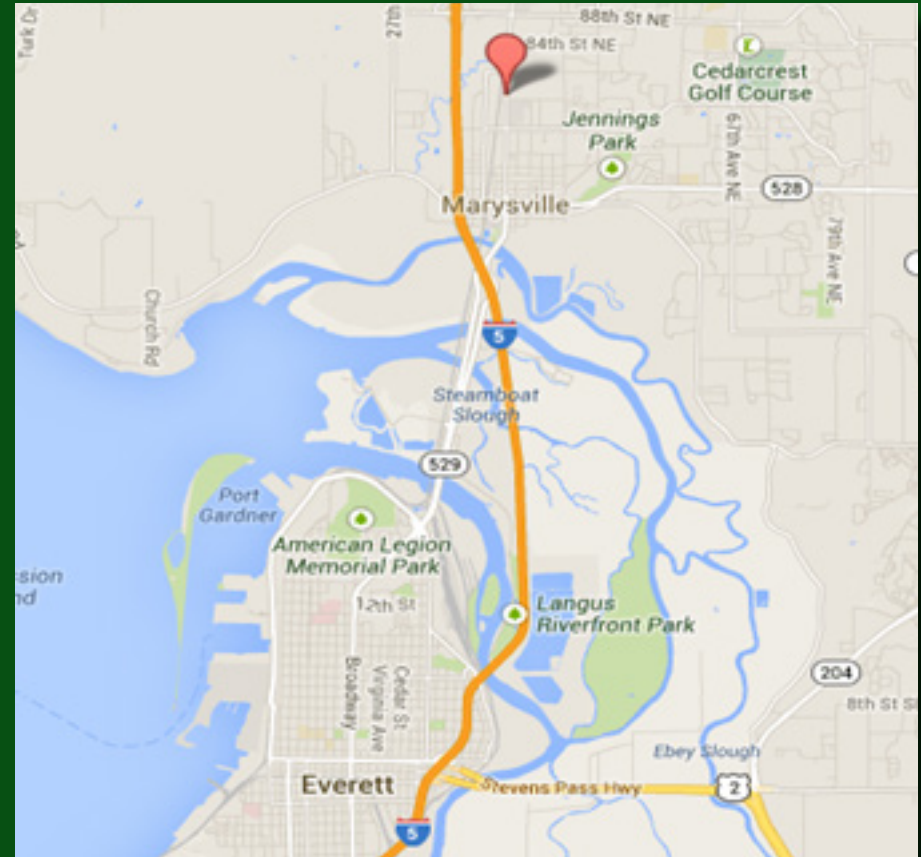


CBA# 610660



1325 STATE AVENUE

MARYSVILLE, WA 98270



CBA #610660



workmanres.com

WorkmanReal Estate Services | 127 Avenue A, Suite 202, Snohomish WA 98290 w| 425-754-4518